



# LIVEAWAY: MADEIRA

MAR 15 - APR 13, 2024

Presented by

**GLP Worldwide for  
Canadian University  
Alumni and Friends**

*Travel for  
Travellers*

BY GLP WORLDWIDE





# GLP WORLDWIDE LIVEAWAY

## MAKE NEW TRAVEL FRIENDS

Travel with our alumni community to experience another community

*Travel for  
Travellers*

BY GLP WORLDWIDE

## DO SOMETHING DIFFERENT

Immerse yourself somewhere that you never imagined spending time

## LESS STRUCTURE, MORE FREE TIME

Have time to relax, explore and 'do-your-own-thing' inside a semi-structured trip



Dear Alumni and Friends,

We're excited to offer you a unique opportunity to redefine travel. Discover the stunning island of Madeira on a Live Away journey. Live Away is a long-stay travel experience that lets you immerse yourself in the local community and culture, offering a stress-free, organized trip that still allows for flexibility to relax and explore at your own pace. Madeira is the perfect destination for this type of trip, with its breathtakingly beautiful landscapes, stunning mountain ranges, lush green forests, and crystal-clear waters that stretch as far as the eye can see.


In Madeira, you'll find a warm and welcoming community that takes pride in its culture, traditions, and hospitality. The island's rich cultural heritage is reflected in its architecture, cuisine, and local customs. You can explore the charming capital, Funchal, with its cobbled streets, colourful markets, and fascinating history; and indulge in the incredible array of local cuisine that blends traditional Portuguese dishes with African and Mediterranean influences.

Madeira is a paradise for nature lovers and outdoor enthusiasts, with its diverse landscapes and a wide range of activities to explore. From hiking along stunning mountain ranges and dramatic cliff-top trails, to kayaking along crystal clear waters and watching dolphins play in their natural habitat, there's something for everyone. If you prefer to relax and take in the stunning views, visit the world-renowned Botanical Gardens, Orchid Garden, or the Monte Palace Tropical Garden. Spend hours exploring these beautiful gardens, taking in the scent of exotic flowers, and admiring the breathtaking scenery.

No trip to Madeira would be complete without experiencing its famous wine. Madeira wine has been produced on the island for centuries, and it's a must-try for anyone who appreciates a good glass of wine.

Join us on this incredible journey to Madeira, where you can experience slow travel, immerse yourself in the local community and culture, and explore the island's natural beauty. This is an opportunity not to be missed, and we look forward to welcoming you to this magical destination. Please contact GLP Worldwide at [1-866-760-1987](tel:1-866-760-1987) or [alumni@glpworldwide.com](mailto:alumni@glpworldwide.com)

Sincerely,



**Timothy Tsung**  
**Director of Product Development**  
**GLP Worldwide**

Any and all facts, information and descriptions contained in this brochure are believed to be accurate at the time of publishing. Itineraries, ships, product offers, terms and any other information provided herein are subject to change without notice. Completeness or accuracy is not guaranteed, and the most up-to-date information can be obtained on our website or by calling us at [1-866-760-1987](tel:1-866-760-1987).

Although considerable care has been taken in preparing the information obtained in this brochure, it is provided on an "as is" basis, without warranty of any kind either express or implied.



A scenic view of a coastal town in Madeira, Portugal, with a large agave plant in the foreground. The town features white buildings with red-tiled roofs, a winding road, and a harbor. The ocean is a deep blue, and the sky is bright blue with scattered white clouds. The agave plant's long, pointed leaves frame the left side of the image.

*Travel for  
Travellers*

BY GLP WORLDWIDE

# WHY MADEIRA?



# MAP OF MADEIRA



The Madeira Islands are an archipelago of volcanic origin in the North Atlantic Ocean, belonging to Portugal. There are two inhabited islands, Madeira and Porto Santo, and two uninhabited groups, the Desertas and the Selvagens. The islands are the summits of mountains that have their bases on the ocean floor. Madeira Island, the largest of the group, is 55 km long, has a maximum width of 22 km and a coastline of about 144 km, and rises in the centre to Ruivo Peak 1,861 metres above sea level. The greater part of the interior above 900 metres is uninhabited and uncultivated.

Outside Funchal, East Madeira is the island's most heavily populated area. The 'second city' and former capital Machico, Madeira's main port at Caniçal, and the stilt-walking airport are all at this end of the island. Far from Funchal and the developed east side of the island, the west of Madeira gives a completely different perspective of the island, From green laurel forests to the blue Atlantic in just a few kilometres. North Madeira's geography means this part of the island has a different pace of life. Difficult roads, a more rugged coastline and turbulent waters than in the south make it a far wilder Madeira.



# WHY MADEIRA?

About 900 km off the coast of Morocco, the autonomous region of Madeira is a tiny but magical island of Portugal. Competing with the island of Tenerife to the south for the moniker “Island of Eternal Spring”, its pleasant subtropical weather all year round draws visitors from Europe to this mountain enclave.

In contrast to the popular sandy beaches of the Canary Islands, Madeira’s coastline is mostly dramatic rocky cliffs, making for scenic views at every turn along its numerous windy roads. From the capital city of Funchal, access to virtually every part of the island is possible in under ninety minutes, making it ideal to explore everything without having to stay in different spots.

The amenable climate and volcanic soil yield a bounty of exotic fruits, vegetables, and of course wine, in particular the fortified version aptly called Madeira, which is revered the world over.

Considered for years as a destination primarily for the older crowd, the island’s rugged terrain has attracted the adventure-seeking younger set in recent years due to the number of activities for those looking for a more active holiday. Wines, walks, Portuguese cuisine and hospitality make Madeira a perfect LiveAway destination.





*Travel for  
Travellers*  
BY GLP WORLDWIDE

# WHERE WE'LL STAY







*Travel for  
Travellers*  
BY GLP WORLDWIDE

## WHERE WE'LL STAY

Funchal is the capital of Madeira and the most populous out of the Portuguese mainland. The city itself is nestled in a great natural amphitheatre, facing the blue Atlantic with a backdrop of dramatic mountains.

Located in the stunning south of Madeira, on its sunniest coast amidst banana plantations and wonderful gardens where flowers bloom all year round in the shelter of the verdant mountains, it is an extremely lush, green and relaxed city by day.

Sleepy it is not, however...scratch Funchal's surface and you will find it to have a vibrant and varied nightlife scene with multiple personalities.

Geologically dramatic, bursting with exotic colour and warmed year-round by the Atlantic sun, Portugal's most enchanting island is a place that keeps all its subtropical holiday promises.



## GOLDEN RESIDENCE

---

The Golden Residence 4-star hotel is a landmark hotel in Funchal, located on the southern coast of Madeira Island. This hotel excels in comfort, design and quality, boasting a view of the Atlantic Ocean and a beauty enhanced by the green and fresh colours of Madeira.

Once inside, the hotel is built with many open spaces to make the most of the natural light and a modern and luxurious design with comfortable and functional public areas to rest, relax, read or socialize.

The beautiful panoramic views of the sea and the island's largest pebble beach (Praia Formosa) and Cabo Girão (Europe's highest promontory), create a unique atmosphere. The hotel also has an excellent location for capturing photos of the island's spectacular sunsets.















Standard Room



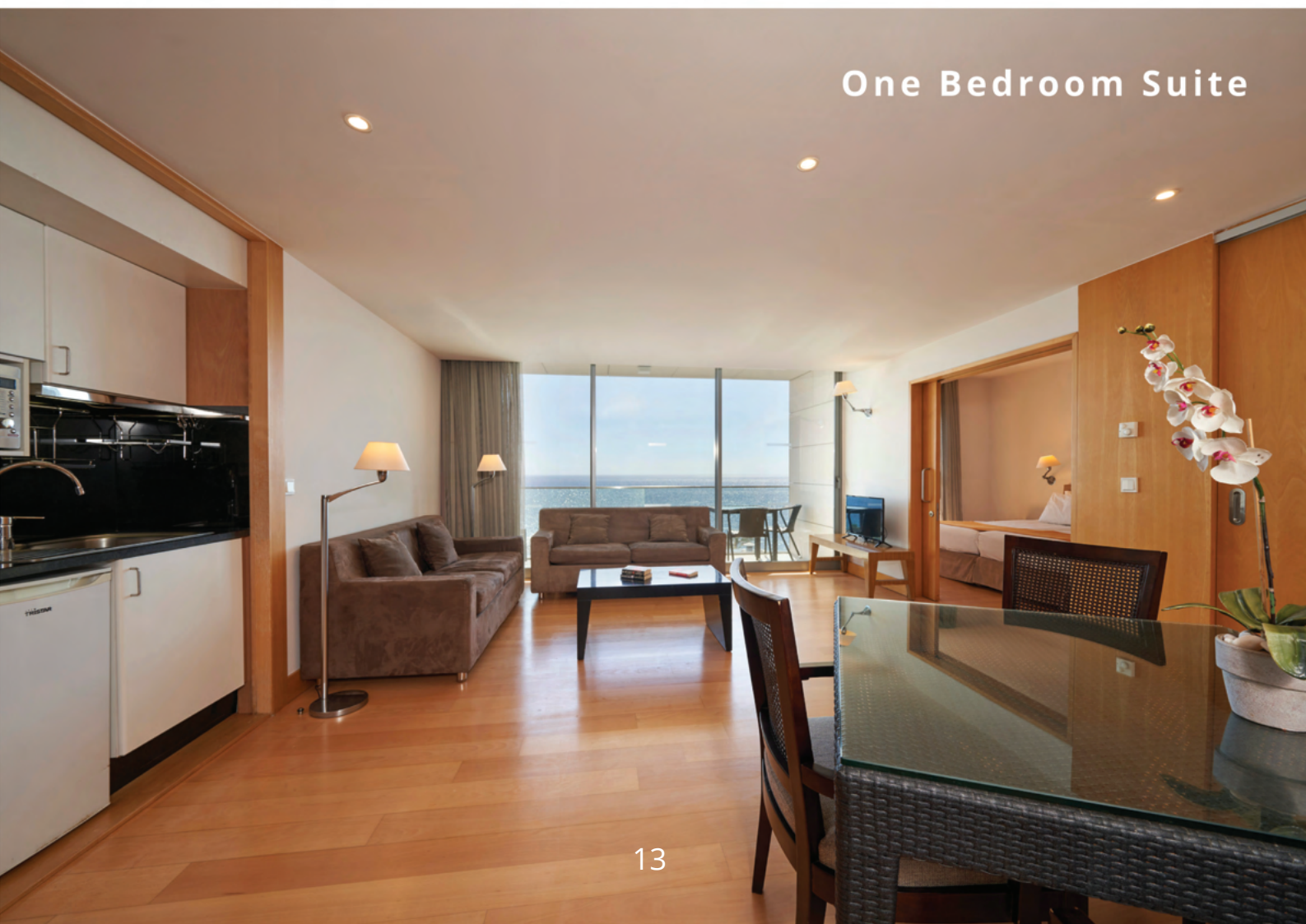
Standard Room



Jr. One Bedroom Suite



One Bedroom Suite





Bathroom (Jr. 1 Bdrm & 1 Bdrm)



Kitchenette (Jr. 1 Bdrm & 1 Bdrm)





# WHAT'S NEARBY

Our hotel is in the Lido neighbourhood with its prominent coastal promenade lined with palm trees and bordered by splendid botanical gardens. The promenade links the Lido area with the pebbled Praia Formosa beach at the western end of Funchal, offering breathtaking views over the sea and towards Cabo Girão.

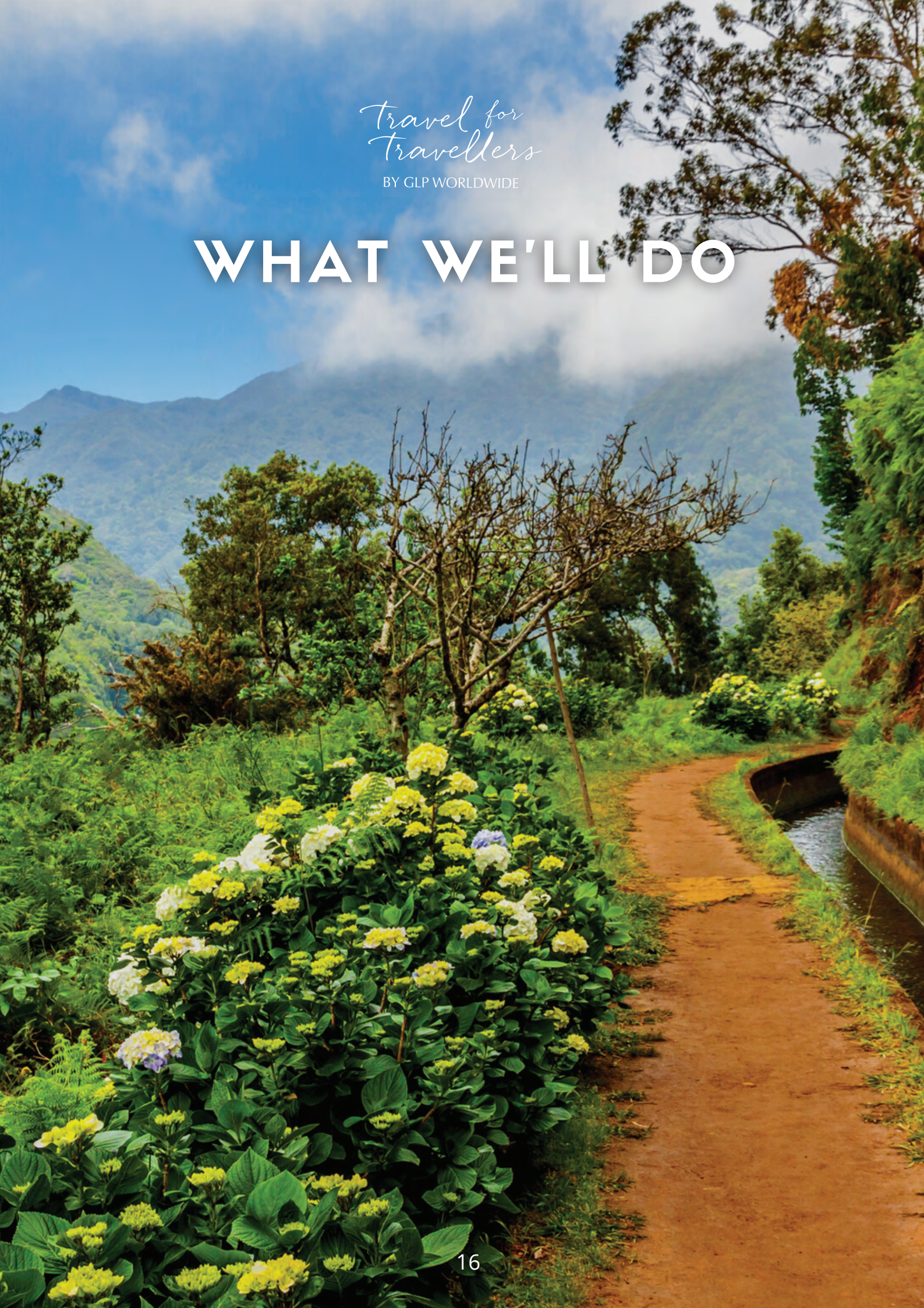
- Madeira Airport: 30 min drive
- Funchal Old Town: 15-20 min ride
- Promenade (10kms along the seafront): 2-5 min walk
- Lido Complex: 3-10 min walk





*Travel for  
Travellers*  
BY GLP WORLDWIDE

# WHAT WE'LL DO







*Travel for  
Travellers*  
BY GLP WORLDWIDE

## ACTIVITIES & EXCURSIONS

Our LiveAway program will consist of a full range of excursions and activities to ensure that you have enough to keep yourself occupied while on holiday but also offering flexibility to allow you to do only the things you want to.

Following is a list of some of what we are planning and more programs will be added as we move closer to the trip and know better how many will join us. Each guest will have an Activity Credit included in the overall tour price which will cover many of the activities listed. If you decide to do more, or all, of the programs listed, then you can simply pay the difference either in advance or during the trip (subject to availability).

There is a wide range of opportunities to enable you to get a real sense of the island and understand more about the Madeiran lifestyle. The Atlantic invites you to go swimming, sailing, and fishing, as well as whale & dolphin spotting. For the really adventurous, water skiing, surfing, and diving are also available.

Levada walks in Madeira are some of the best opportunities to get in tune with the nature, landscape and peace of this island. Beyond all of our organized activities, you will of course have plenty of time to explore Funchal and other parts of the island at your own pace.



# POTENTIAL EXCURSIONS

*Travel for  
Travellers*  
BY GLP WORLDWIDE

We offer a diverse range of experiences in Madeira, and the following list provides only a sample of the possibilities available. **For those seeking more information, a detailed list of activities and prices can be provided upon request.** We continuously update our excursions to ensure the best possible experience for all participants. For a comprehensive list of available options, please do not hesitate to contact us, and we will be delighted to assist you.

## Option 1

### EAST TOUR

Discover the eastern landscapes of Madeira ideal for lovers of natural landscapes. Ascend to Pico do Arieiro, Madeira's third-highest peak, and admire the famous Laurissilva Forest, which dates back to prehistoric times. Admire some of Madeira's emblematic straw-roof houses, pass pretty villages and get stunning seascape views. Enjoy lunch in the colourful town of Santana, characterized by its small, thatched triangular houses. Visit Machico, where you can look over the bay and the golden sandy beach.

## Option 2

### WEST TOUR

The West Coast of Madeira is full of spectacular lookouts, traditional fishing villages, and natural wonders. You will have the opportunity to observe some of the most important landmarks on the Island. We will stop in Câmara de Lobos fishing village and in Cabo Girão, the highest sea cliff in Europe. We will pass through the plateau of Paúl da Serra and reach one of the most popular villages in Madeira: Porto Moniz. Finally, we visit the beautiful villages of Seixal and São Vicente with several viewpoints along the way.





# POTENTIAL EXCURSIONS

*Travel for  
Travellers*  
BY GLP WORLDWIDE

## Option 3

### NORTH TOUR

Our trip begins with a jaw-dropping cable car ride down a cliff face to an organic plantation by the sea. From here we head up over the middle of the island to a small wine museum on the north coast. After lunch at a restaurant with a breathtaking view of the northeast shore, we will stop at some viewpoints to marvel at the views of the sea and surrounding mountains. We'll make a final stop at Madeira's rum distillery to see the antique equipment still in use today to produce a fine local example of the spirit which is a key ingredient in the local cocktail "Poncha".

## Option 4

### LEVADA AND VEREDA WALKS

Madeira's terrain, which ranges from sea level to 1,862m, makes it a paradise for hikers, offering easy access to a variety of landscapes, including mountain peaks with stunning Atlantic views, lush forests, and rugged coastal paths. Levadas, developed as irrigation systems, are maintenance paths that run beside mini-canals and provide 2,500km of walking trails dating back to the 16th century. Meanwhile, Veredas are marked hiking trails in the island's mountainous regions, providing breathtaking views but often requiring more advanced hiking skills.





# POTENTIAL EXCURSIONS

*Travel for  
Travellers*  
BY GLP WORLDWIDE

## Option 5

### CÂMARA DE LOBOS & EIRA DO SERRADO

Eira do Serrado viewpoint is located at 1094m above sea level, and from here you can admire the three highest mountains of Madeira, as well as the valley known as the Nun's Valley. Then, we'll explore the fishing village Câmara de Lobos, where you'll see traditional fishing boats called xavelhas, as well as taste some locally made drinks.

## Option 6

### FLAVOURS OF MADEIRA FOOD & WINE TASTING

Dip into Madeira's thriving culinary scene on this wine and food tour. Start with a visit to Blandy Wine Lodge, where we'll sample a number of wines ranging from 5-15 years old. Next, visit the oldest cookie factory in Madeira ("Fábrica Santo António), before finishing with a typical pork meat sandwich or black scabbard fish with local passion fruit juice.





# POTENTIAL EXCURSIONS

*Travel for  
Travellers*  
BY GLP WORLDWIDE

## Option 7

### MONTE PALACE TROPICAL GARDEN & TOBOGGAN RIDE

This beautiful garden has plants and trees from all over the world. The Garden's owner, Mr Berardo, is a great art collector, and part of his collection can be admired along with the gardens. We'll head to the gardens using one of Madeira's panoramic cable cars, and on the way down we'll experience the unique 'wicker basket toboggan ride,' which will be great fun for all.

## Option 8

### DOLPHIN WATCHING IN A SPANISH GALLEON

Enjoy a 3-hour sail aboard a ship that is a replica of the Christopher Columbus flagship. Enjoy a boat trip with a sense of adventure, and feel what it was like when the island was discovered 500 years ago. Experience history while at the same time enjoying the breathtaking views of Madeira's south coast. It'll be possible to see dolphins, whales, turtles, and more wildlife native to the Madeira archipelago.





# POTENTIAL EXCURSIONS

*Travel for  
Travellers*  
BY GLP WORLDWIDE

## Option 9

### 4X4 JEEP TOUR

Stray from the beaten path on a 4x4 Jeep and see a side of Madeira that's inaccessible to traditional tour vehicles. Admire some of the most breathtaking viewpoints on the island, such as Miradouro do Rancho, which is next to a private 'cable car' station that farmers use to access their remote planting terraces.

## Option 10

### THE MAGIC OF HONEY

We'll first have a brief exploration of the caves of Sao Vicente before visiting a local apiary run by a passionate beekeeper who is keeping his family tradition alive. Donning the requisite "bee suits", we will have the chance to visit the hives and understand the process of how honey is created in an entirely organic way.





# POTENTIAL EXCURSIONS

*Travel for  
Travellers*  
BY GLP WORLDWIDE

## Option 11

### WINE ON THE MOUNTAIN

We drive through one of the longest tunnels on the island and up some twisty narrow roads for a visit to the Quinta do Barbusano winery. Enjoying spectacular views over the valley, we will enjoy a cross sampling of 6 different wines accompanied by a traditional local lunch called 'Espetada' - beef skewered on branches of laurel and grilled over the embers of an open fire.

## Option 12

### HIGH TEA AND GARDENS AT REID'S PALACE

Visit the famous Reid's Palace, a 19th-century hotel and the most famous and most iconic on the island. It was once visited by such notable personalities as Winston Churchill, George Bernard Shaw and the Empress of Austria. After a visit to the incredible gardens, enjoy a traditional afternoon tea with scones, finger sandwiches and other delights.





# POTENTIAL EXCURSIONS

*Travel for  
Travellers*  
BY GLP WORLDWIDE

## Option 13

### MADEIRA BY KAYAK

Enjoy the magnificent Atlantic Ocean and see the island in a unique way. Madeira offers the ideal conditions for this water sport, as water temperature shifts between 18 and 20C throughout the whole year. Admire one of the natural reserves of Madeira, the perfect refuge for a number of marine species.

## Option 14

### VISIT A HERBAL TEA FARM

A trip to a Herbal Tea Farm in Funchal, with over 100 years of history, offers visitors an educational experience on the organic production of herbal teas. The tour includes a guide to explain the cultivation, harvesting, drying, and packaging processes. Guests can enjoy a tasting session of aromatic herbs, homemade cakes, and sweets. The visit provides a chance to learn about the variety of herbs grown at the farm, as well as the opportunity to choose and sample the desired infusions.





*Travel for  
Travellers*

BY GLP WORLDWIDE

# PRICING & INCLUSIONS



# PRICING & TERMS

## 14 NIGHTS MADEIRA LIVEAWAY

March 15 - 30, 2024 Or March 29 - April 13, 2024

ROOM TYPE	DOUBLE OCCUPANCY	SINGLE OCCUPANCY
Golden Residence Standard Room	CAD \$5,990 per person	CAD \$6,980 per person
Golden Residence Jr. One Bedroom Suite	CAD \$6,150 per person	CAD \$7,180 per person
Golden Residence One Bedroom Suite	CAD \$6,390 per person	N/A

### INCLUSIONS:

- International roundtrip airfare in economy class from Toronto to Madeira and return from Madeira to Toronto (additional cost to be applied for other departure cities) including applicable air taxes and fees
- Private transfers (based on min 2 members arriving on the same flight) from the airport to hotel upon arrival and on the return
- All other transportation for excursions described in the itinerary and limited availability to transport members around the island on non-excursion days
- 14 nights accommodation at with daily breakfast in chosen room category
- Activity Credit of CAD \$700 per person that can be applied to excursions or activities throughout the stay
- Local English speaking guide or host on excursions (with purchase of optional tours)
- Transportation by private coach or minibus or taxi as required for all excursions (with purchase of optional tours)
- Entrance fees if applicable for excursions (with purchase of optional tours)
- Local host who will be available during breakfast some days to assist with facilitating member's requests
- SIM card for your mobile phone valid throughout your stay which includes internet data and minutes to call local and international phones
- 10x single tickets for use of the local bus system in Funchal
- All local taxes, portorage fees, service charges, and gratuities

### EXCLUSIONS:

- Meals not included in itinerary
- Optional travel, health, accident or other insurances
- Gratuities for local guides and drivers

### AIR CREDIT:

If you wish to arrange your own air from Toronto to Madeira and return Madeira to Toronto, an air credit of CAD \$1,000 per person will be deducted from the tour cost. Please contact us for air deviation, premium economy or business class upgrade surcharges.

*Note:*

1. Passenger names must match passport.
2. Please ensure that passports are valid up till after six (6) months at last destination

### DEPOSITS AND PAYMENT

**DEPOSIT** CAD \$1,000 per each confirmed passenger at the time of booking

**FINAL PAYMENT** Due on Nov 16, 2023

### CANCELLATION CHARGES

From time of booking to Nov 15, 2023	CAD \$1,000 per person
From Nov 16, 2023 – Jan 15, 2024	50% of tour cost
From Jan 16, 2024 – date of departure	100% of tour cost

*Air cancellation penalties are subject to airline regulations.*

*We strongly recommend the purchase of trip cancellation or comprehensive travel insurance at the time of booking. Please contact GLP Worldwide for a quotation.*

*Any booking resulting out of the information in this brochure is subject to the complete terms & conditions found on our website [www.travelfortravellers.com/alumni-travel/](http://www.travelfortravellers.com/alumni-travel/)*

*GLP Worldwide acts solely as agent between the passenger and the supplier(s) providing services as described in the brochure. GLP Worldwide assumes no responsibility for any claims, damages or expenses arising from situations beyond our control. All trains, transportations and services booked are subject to the Conditions of Carriage of the relevant carrier. Full Conditions of Carriage for each carrier are available on our website or by contacting our office.*



# PRICING & TERMS

## 28 NIGHTS MADEIRA LIVEAWAY

March 15 - April 13, 2024

ROOM TYPE	DOUBLE OCCUPANCY	SINGLE OCCUPANCY
Golden Residence Standard Room	CAD \$8,170 per person	CAD \$10,060 per person
Golden Residence Jr. One Bedroom Suite	CAD \$8,380 per person	CAD \$10,440 per person
Golden Residence One Bedroom Suite	CAD \$8,850 per person	N/A

### INCLUSIONS:

- International roundtrip airfare in economy class from Toronto to Madeira and return from Madeira to Toronto (additional cost to be applied for other departure cities) including applicable air taxes and fees
- Round trip transfers (based on min 2 guests arriving on the same flight) from the airport to hotel upon arrival and on the return
- 28 nights accommodation with daily breakfast in chosen room category
- 2 specialty dinners
- Activity Credit of CAD \$1000 per person that can be applied to excursions or activities throughout the stay
- Local English speaking guide or host on excursions (with purchase of optional tours)
- Transportation by private coach or minibus or taxi as required for all excursions (with purchase of optional tours)
- Entrance fees if applicable for excursions (with purchase of optional tours)
- Services of a GLP local host who will be available to assist with facilitating guest requests during their stay
- SIM card for your mobile phone valid throughout your stay which includes internet data and minutes to call local and international phones
- 10x single tickets for use of the local bus system in Funchal
- All local taxes, portorage fees, service charges, and gratuities

### EXCLUSIONS:

- Meals not included in itinerary
- Optional travel, health, accident or other insurances

### AIR CREDIT:

If you wish to arrange your own air from Toronto to Madeira and return Madeira to Toronto, an air credit of CAD \$1,000 per person will be deducted from the tour cost. Please contact us for air deviation, premium economy or business class upgrade surcharges.

*Note:*

1. Passenger names must match passport.
2. Please ensure that passports are valid up till after six (6) months at last destination

### DEPOSITS AND PAYMENT

**DEPOSIT** CAD \$1,500 per each confirmed passenger at the time of booking  
**FINAL PAYMENT** Due on Nov 16, 2023

### CANCELLATION CHARGES

From time of booking to Nov 15, 2023	CAD \$1,500 per person
From Nov 16, 2023 – Jan 15, 2024	50% of tour cost
From Jan 16, 2024 – date of departure	100% of tour cost

*Air cancellation penalties are subject to airline regulations.*

*We strongly recommend the purchase of trip cancellation or comprehensive travel insurance at the time of booking. Please contact GLP Worldwide for a quotation.*

*Any booking resulting out of the information in this brochure is subject to the complete terms & conditions found on our website [www.travelfortravellers.com/alumni-travel/](http://www.travelfortravellers.com/alumni-travel/)*

*GLP Worldwide acts solely as agent between the passenger and the supplier(s) providing services as described in the brochure. GLP Worldwide assumes no responsibility for any claims, damages or expenses arising from situations beyond our control. All trains, transportations and services booked are subject to the Conditions of Carriage of the relevant carrier. Full Conditions of Carriage for each carrier are available on our website or by contacting our office.*



# UPCOMING INFO SESSION! CALL IN TODAY TO REGISTER NOW! 1-866-760-1987

## BRAZILIAN AMAZON ADVENTURE

APR 27 - MAY 12, 2024



## NORWAY & LAPLAND

MAY 17 - JUN 1, 2024



## THE LEGENDARY SILK ROAD

OCT 15 - OCT 30, 2023



## ISRAEL, EGYPT & JORDAN

JAN 24 - FEB 8, 2024



## KENYA TANZANIA

OCT 2024



## JOURNEY THROUGH VIETNAM

Nov 6 - Nov 20, 2023



*Travel for  
Travellers*

BY GLP WORLDWIDE

## CONTACT GLP WORLDWIDE AT

26 - 1211 Denison Street, Markham, ON. Canada L3R 4B3  
1-866-760-1987 | Monday - Friday | 9:00 AM - 6:00 PM  
[travelfortravellers.com](http://travelfortravellers.com)  
[alumni@glpworldwide.com](mailto:alumni@glpworldwide.com)

TICO#: 50008899